

Crosby® / Bullard® Golden Gate® Hooks



SEE APPLICATION AND WARNING INFORMATION

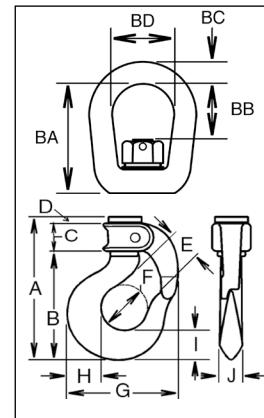
Para Español: www.thecrosbygroup.com

On Pages 144-145

CLOSED SWIVEL BAIL



- For use where hoisting line or shackle can be inserted into the bail.
 - BL-C** - with self-closing gate.
 - BL-A** - with manual-closing gate.
- Suitable for infrequent, non-continuous rotation under load.
- Use in corrosive environment requires shank and nut inspection in accordance with ASME B30.10-1.10.4(b)(5)(c)2009.



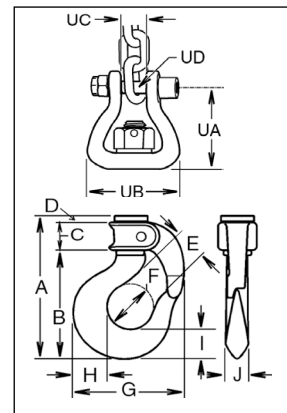
Hook Size	BL-C Stock No.	BL-A Stock No.	Gate Type	Working Load Limit (Tons)*	Weight Each (lbs.)	Dimensions (in.)													
						A	B	C	D	E	F	G	H	I	J	BA	BB	BC	BD
1	1050210	1050001	LIF-LOK	.50	0.8	3.23	2.31	.63	.26	.69	.88	2.25	.69	.63	.44	1.75	.63	.31	1.00
2	1050221	1050012	PIN-LOK	1.00	1.3	4.12	3.00	.93	.16	.97	1.25	2.88	.81	.75	.56	1.86	.95	.38	1.25
3	1050232	1050023	PIN-LOK	1.40	1.9	4.50	3.31	.94	.22	1.06	1.38	3.19	.94	.84	.63	2.44	1.31	.50	1.50
4	1050243	1050034	PIN-LOK	1.70	2.2	4.88	3.63	1.00	.22	1.13	1.50	3.63	1.16	1.00	.75	2.66	1.35	.50	1.50
5	1050254	1050045	ROLLOX	2.30	3.8	5.63	4.12	1.23	.25	1.25	1.64	4.09	1.31	1.12	.84	2.91	1.60	.63	1.75
6	1050265	1050056	ROLLOX	4.00	4.6	6.23	4.70	1.25	.25	1.39	1.64	4.56	1.57	1.34	.97	3.10	1.41	.63	1.75
7	1050276	1050067	ROLLOX	4.20	6.9	6.61	5.21	1.12	.25	1.50	2.00	4.94	1.63	1.44	1.13	3.48	1.67	.75	2.00
8	1050287	1050078	ROLLOX	5.50	9.6	7.17	5.80	1.06	.28	1.75	2.25	5.84	2.00	1.65	1.23	4.06	2.00	.88	2.25
9	1050298	1050089	ROLLOX	7.20	13.5	7.85	6.45	1.06	.31	1.88	2.50	6.50	2.06	1.81	1.38	4.65	2.21	1.03	2.50
11	1050309	1050100	TIP-LOK	9.20	20.5	9.62	8.00	1.25	.31	2.25	3.00	7.56	2.63	2.25	1.62	4.87	2.18	1.13	2.75
12	1050320	1050111	TIP-LOK	12.30	27.0	10.53	8.84	1.25	.38	2.50	3.25	8.69	2.94	2.59	1.94	5.13	2.25	1.25	3.13
14	1050342	1050133	TIP-LOK	18.50	55.0	12.60	10.75	1.41	.38	3.38	4.25	11.00	3.50	2.97	2.38	8.00	4.25	1.63	4.10

*Ultimate Load is 4 times the Working Load Limit.

OPEN SWIVEL BAIL



- Open Swivel Bail for attachment to link chain.
 - BL-E** - with Self-Closing Gate
 - BL-G** - with Manual-Closing Gate
- Suitable for infrequent, non-continuous rotation under load.
- Use in corrosive environment requires shank and nut inspection in accordance with ASME B30.10-1.10.4(b)(5)(c)2009.



Hook Size	BL-E Stock No.	BL-G Stock No.	Gate Type	Working Load Limit (Tons)*	Weight Each (lbs.)	Dimensions (in.)													
						A	B	C	D	E	F	G	H	I	J	UA	UB	UC	UD
3	1051607	1051706	PIN-LOK	1.40	1.8	4.50	3.31	.94	.22	1.06	1.38	3.19	.94	.84	.63	2.08	2.31	.52	.38
4	1051618	1051717	PIN-LOK	1.70	2.1	4.88	3.63	1.00	.22	1.13	1.50	3.63	1.16	1.00	.75	2.14	2.31	.52	.38
5	1051629	1051728	ROLLOX	2.30	3.2	5.63	4.12	1.23	.25	1.25	1.64	4.09	1.31	1.12	.84	2.56	2.63	.62	.44

*Ultimate Load is 4 times the Working Load Limit.